



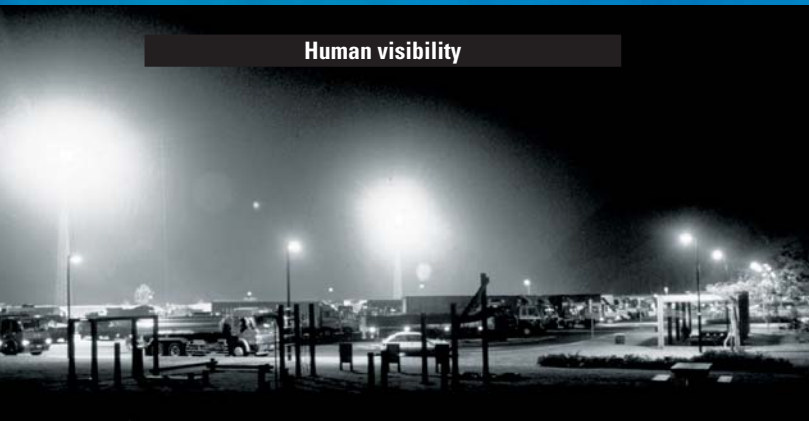
Reduced Material Discoloration Low-Insect Attraction

UV-Cut Metal Halide

Insect visibility



Human visibility



UV-Block Coating on outer bulb

Reduces 90% of UV-A while maintaining the CRI and Color Temperature of a standard metal halide lamp.

Attracts 50% less insects

Reduces the UV radiation that attracts insects.

Insects' peak spectrum sensitivity is around 360nm.

EYE UV-Cut MH reduces UV radiation from the lamp, including 360nm.

Prevents discoloration

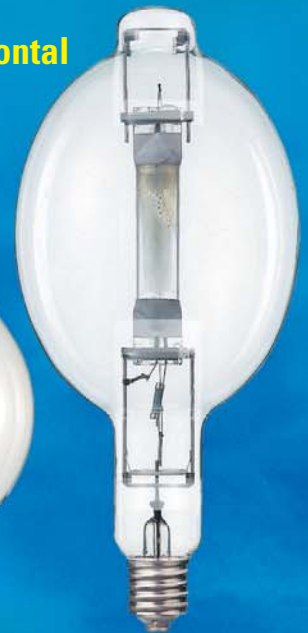
Reduces 90% of the 300-380nm radiation and prevents materials from discoloring, fading and deterioration.

Increases Fixture Life

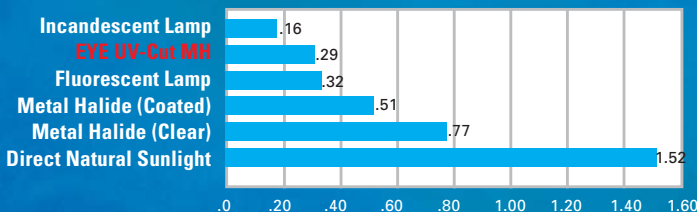
Reduces damage (yellowing) to the polycarbonate lenses of fixtures. EYE UV-Cut MH ensures maximum light output, increasing the life of the fixture.

Universal Burning and Horizontal to Base Up versions

Covers a wide range of fixtures, for floodlights, post top, high bay and indirect lighting types.



Damage factor; relative factor to compare different light sources. The light sources with smaller values have least impact for materials.



Insect Attraction Comparison

Light Source	Insect Attractive (if MH = 100)*
Metal Halide (Coated)	100
Mercury Vapor (Coated)	99
Fluorescent	84
EYE UV-Cut MH	48
Incandescent	34
High Pressure Sodium	18

* Our research

APPLICATIONS

- Retail Stores
- City Parks
- Parking Lots
- Street Lighting/Roadway
- Food Processing Facilities
- Sports Facilities (Outdoor/Indoor)
- Industrial Plants (Outdoor/Indoor)

ISO 9001:2000 Certified

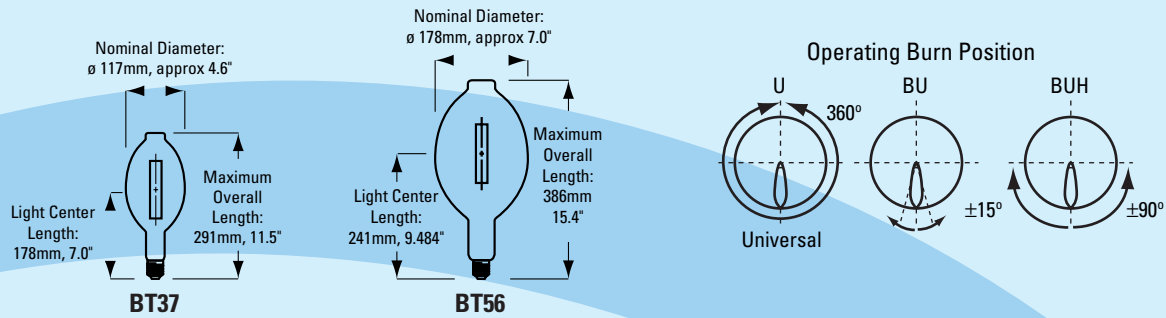


**EYE LIGHTING INTERNATIONAL
OF NORTH AMERICA, INC.**

A SUBSIDIARY OF IWASAKI ELECTRIC CO., LTD.



Reduced Material Discoloration Low-Insect Attraction UV-Cut Metal Halide

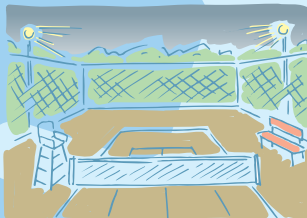


Watts	Bulb	Base	Product Code	Product Description	ANSI Code	Case Qty.	Initial Lumens	Mean Lumens	Average Life Hours	Color Temp. (K)	CRI	Fix. Req.	Burn Pos.
400	BT37 Clear	Mog	57905	M400X/U/UVC	M59	12	38000 V 34000 H	30000 V 26800 H	20000 V 15000 H	4200	65	S	U
400	BT37 Clear	Mog	57910	M400SX/BU/UVC	M59	12	42000	33000	20000	4200	65	S	BU
1000	BT56 Clear	Mog	57920	M1000BX/U/UVC	M47	6	115000 V 110000 V	90000 V 86300 H	12000 V 9000 H	4200	65	S	U
1500	BT56 Clear	Mog	57923	M1500B/BUH/UVC	M48	6	155000	140000	3000	4000	65	E	BUH

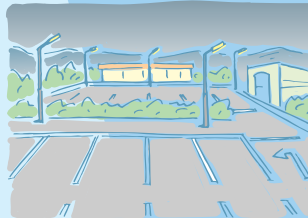
Fixture Requirements: S=Open fixture if the operating position is base up $\pm 15^\circ$ E=Enclosed fixture

APPLICATIONS

Less-Insect Attraction



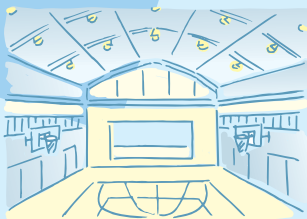
Sports Facilities (Outdoors)



Parking Lots



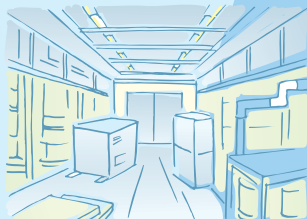
Industrial (Outdoors)



Sports Facilities (Indoors)



Parks/Streets



Warehouses/Factories

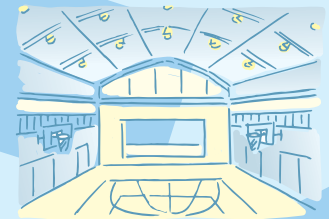
Reduced Material Discoloration



Retail Stores



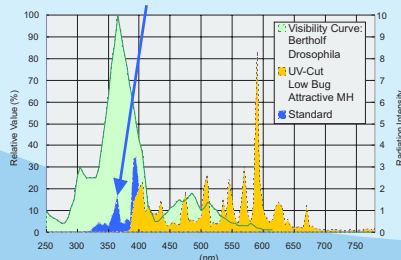
Hotels/Entrance Foyers/Hallways



Sports Facilities (Indoors)

Spectral Distribution of UV-Cut Metal Halide

Insect attracting spectrum that is eliminated from standard MH curve



WARNING: This lamp can cause serious skin burn and eye inflammation from shortwave ultraviolet radiation if outer envelope of the lamp is broken or punctured. Do not use where people will remain for more than a few minutes unless adequate shielding or other safety precautions are used. Lamps that will automatically extinguish when the outer envelope is broken or punctured are commercially available. This lamp complies with U.S. Federal Standard 21 CFR 1040.30

ISO 9001:2000 Certified



**EYE LIGHTING INTERNATIONAL
OF NORTH AMERICA, INC.**
A SUBSIDIARY OF IWASAKI ELECTRIC CO., LTD.

Address: 9150 Hendricks Rd., Mentor, Ohio 44060

Phone: 888-665-2677 Fax: 800-811-7395 e-mail: sales@eyelighting.com

Phone: (440) 350-7000 Fax: (440) 350-7001 www.eyelighting.com